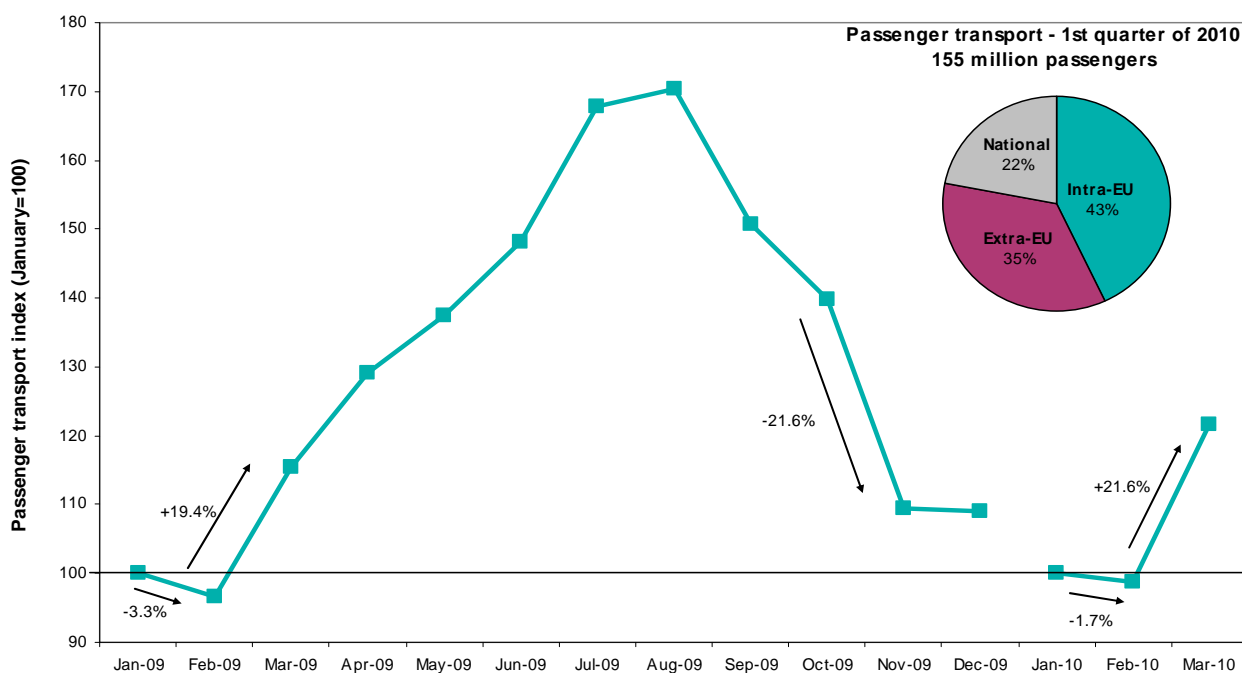


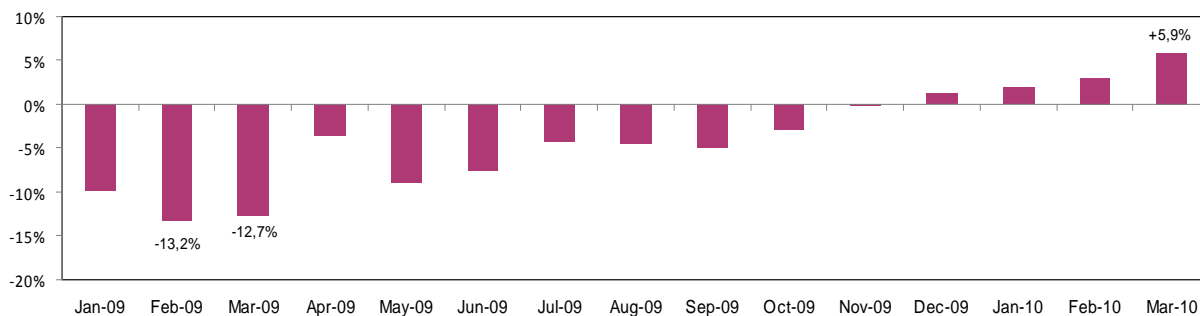
Passenger air transport – 2009 and 2010 monthly data

Graph 1: EU-27 monthly passengers carried for 2009 and the first quarter of 2010 (January=100)*



Source: Eurostat ([avia_paoc](#))

Graph 2: Evolution of EU-27 passengers carried (compared to the same month of the previous year)*



Source: Eurostat ([avia_paoc](#))

* For more details about the data presented, please see the notes in the "Methodology" section. The total number of passengers carried at EU-27 level presented for the first quarter of 2010 is estimated.

Table 1: Passengers carried (in 1000) per country: monthly data for 2009 and the first semester of 2010

	2009												Total 2009	2010						Up-to- date total 2010	Growth 2009- 2010 based on months available in 2010	
	Jan	Feb	Mar	Apr	May	Jun	Jul	Aug	Sep	Oct	Nov	Dec		Jan	Feb	Mar	Apr	May	Jun			
	BELGIUM	1 242	1 269	1 537	1 874	1 921	1 954	2 304	2 236	2 031	1 881	1 593		1 471	21 314	1 337	1 398	:	:			:
BULGARIA	273	240	261	273	414	777	1 042	1 072	689	312	227	259	5 839	274	243	273	:	:	:	790	2,1%	
CZECH REPUBLIC	671	641	836	981	1 032	1 235	1 447	1 474	1 291	1 053	855	852	12 367	715	686	887	816	1 050	1 203	5 358	-0,7%	
DENMARK	1 327	1 318	1 531	1 806	1 911	1 953	2 055	1 916	1 839	2 047	1 653	1 503	20 860	:	:	:	:	:	:	:	:	
GERMANY	9 949	9 855	11 940	12 981	14 017	14 550	15 922	15 722	15 229	15 228	11 695	11 063	158 149	10 207	9 986	13 091	10 879	15 145	15 548	74 856	2,1%	
ESTONIA	99	91	114	111	115	127	128	130	118	118	99	92	1 341	88	84	109	87	124	138	631	-3,9%	
IRELAND	1 825	1 820	2 141	2 201	2 364	2 516	2 763	2 767	2 296	2 167	1 721	1 688	26 269	1 488	1 548	1 865	:	:	:	4 901	-15,3%	
GREECE	1 102	985	1 211	1 894	3 122	4 218	5 126	5 462	4 417	2 747	1 275	1 323	32 882	1 215	1 087	1 375	:	:	:	3 677	11,5%	
SPAIN	8 630	8 901	10 715	12 440	13 063	14 165	16 465	17 000	14 437	13 207	9 773	9 523	148 318	8 856	9 030	11 320	11 208	:	:	40 414	-0,7%	
FRANCE	8 032	7 658	8 967	10 347	10 514	10 666	12 117	12 080	10 317	10 025	8 259	8 580	117 562	:	:	:	:	:	:	:	:	
ITALY	6 059	5 952	7 366	8 702	9 142	9 548	10 806	11 484	9 928	8 894	6 893	7 060	101 824	6 698	6 432	8 071	:	:	:	21 202	9,4%	
CYPRUS	274	249	336	560	642	715	860	927	779	701	371	315	6 730	279	259	388	463	672	:	2 060	-0,1%	
LATVIA	256	224	275	326	351	386	431	428	387	375	307	317	4 063	281	271	344	296	410	472	2 075	14,1%	
LITHUANIA	129	107	132	140	157	179	198	198	177	171	142	138	1 867	136	126	168	141	214	241	1 027	21,8%	
LUXEMBOURG	89	91	105	135	143	144	162	168	144	139	111	105	1 535	92	95	119	111	148	146	711	0,6%	
HUNGARY	487	428	548	672	694	743	869	919	829	766	578	549	8 081	496	454	585	541	716	777	3 568	-0,1%	
MALTA	138	140	184	255	258	278	347	377	324	280	180	158	2 919	148	148	207	240	307	331	1 381	10,3%	
NETHERLANDS	3 074	2 893	3 393	3 891	4 175	4 132	4 854	4 813	4 325	4 277	3 357	3 295	46 479	3 116	3 051	3 700	3 215	4 449	4 445	21 977	1,9%	
AUSTRIA	1 553	1 516	1 741	1 783	1 857	1 967	2 177	2 123	2 030	1 873	1 575	1 621	21 817	1 617	1 594	1 908	:	:	:	5 119	6,4%	
POLAND	1 075	1 036	1 162	1 289	1 475	1 686	1 948	1 861	1 772	1 466	1 142	1 134	17 046	1 103	1 081	1 304	:	:	:	3 487	6,5%	
PORTUGAL	1 413	1 321	1 629	2 121	2 162	2 228	2 662	2 871	2 392	2 166	1 543	1 597	24 104	1 465	1 425	1 764	1 913	2 247	2 399	11 214	3,1%	
ROMANIA	510	470	576	643	643	738	841	887	807	669	579	621	7 984	591	528	658	647	732	820	3 976	11,1%	
SLOVENIA	79	72	84	105	118	148	186	186	154	122	89	80	1 423	77	74	88	49	123	143	555	-8,5%	
SLOVAKIA	115	108	123	139	147	209	278	309	176	127	107	111	1 948	100	99	119	99	135	207	758	-9,7%	
FINLAND	1 080	1 052	1 195	1 157	1 116	1 239	1 205	1 207	1 191	1 245	999	1 144	13 829	1 053	1 041	1 268	860	1 222	1 346	6 790	-0,7%	
SWEDEN	1 733	1 754	2 086	2 077	2 249	2 402	2 174	2 252	2 308	2 282	2 032	1 869	25 219	1 751	1 805	2 214	1 612	2 424	2 557	12 362	0,5%	
UNITED KINGDOM	12 942	12 473	14 764	16 185	17 334	18 732	21 140	21 491	19 177	17 524	13 289	13 481	198 532	12 255	12 470	14 615	12 614	16 650	18 689	87 293	-5,6%	
EU-27*	47 711	46 143	55 093	61 619	65 594	70 638	80 021	81 302	71 914	66 688	52 270	52 068	751 059	:	:	:	:	:	:	:	:	
ICELAND	135	119	101	129	149	218	285	275	163	145	107	105	2 241	94	94	119	102	141	253	802	-5,9%	
NORWAY	:	:	:	:	:	:	:	:	:	:	:	:	:	:	:	:	:	:	:	:	:	:
SWITZERLAND	2 633	2 524	2 929	3 047	2 951	3 110	3 476	3 435	3 150	3 284	2 599	2 789	35 928	2 785	2 716	3 201	2 607	3 118	3 213	17 640	2,6%	
CROATIA	154	133	170	278	424	538	693	739	553	338	163	152	4 335	139	120	169	236	450	580	1 694	-0,1%	
THE FORMER YUGOSLAV REPUBLIC OF MACEDONIA	41	35	40	45	50	56	84	83	56	51	41	48	688	47	36	45	47	59	66	300	12,5%	
TURKEY	4 348	4 304	4 907	5 952	7 563	8 673	10 061	10 520	9 059	8 122	5 907	5 891	79 373	5 712	5 627	6 470	6 935	9 397	10 425	44 566	24,7%	

Source: Eurostat ([avia_paoc](#))

* For more details about the data presented, please see the notes in the "Methodology" section

Table 2. Passengers handled in top airports* (in 1000): monthly data for 2009 and the first semester of 2010

Rank 2009	Airports*	Country	2009												Total 2009	2010						Up-to-date total 2010	Growth 2009-2010 based on months available in 2010
			Jan	Feb	Mar	Apr	May	Jun	Jul	Aug	Sep	Oct	Nov	Dec		Jan	Feb	Mar	Apr	May	Jun		
1	LONDON/HEATHROW	UK	4 853	4 371	5 193	5 613	5 425	5 775	6 477	6 383	5 783	5 687	5 028	5 315	65 904	4 829	4 600	5 211	4 446	5 256	5 782	30 124	-3,5%
2	PARIS/CHARLES DE GAULLE	FR	4 094	3 806	4 513	5 064	5 008	5 098	5 689	5 695	5 022	5 046	4 249	4 406	57 689	:	:	:	:	:	:	:	:
3	FRANKFURT/MAIN	DE	3 519	3 321	4 005	4 232	4 406	4 501	4 864	4 860	4 578	4 598	3 875	3 814	50 573	3 628	3 277	4 334	3 517	4 727	4 815	24 297	1,3%
4	MADRID/BARAJAS	ES	3 099	3 262	3 840	4 195	4 025	4 231	4 804	4 687	4 227	4 192	3 671	3 709	47 944	3 452	3 428	4 117	3 961	:	:	14 958	3,9%
5	AMSTERDAM/SCHIPHOL	NL	2 912	2 722	3 201	3 673	3 893	3 852	4 533	4 485	4 016	3 984	3 159	3 101	43 532	2 936	2 856	3 466	3 008	4 096	4 106	20 468	1,1%
6	ROMA/FIUMICINO	IT	1 993	2 016	2 606	2 960	3 052	2 963	3 346	3 397	3 128	3 019	2 446	2 489	33 416	2 261	2 162	2 759	:	:	:	7 182	8,6%
7	MÜNCHEN	DE	2 162	2 205	2 573	2 714	2 834	2 864	3 027	3 020	3 125	3 104	2 562	2 370	32 560	2 139	2 155	2 861	2 323	3 057	3 198	15 734	2,5%
8	LONDON/GATWICK	UK	1 979	1 989	2 317	2 577	2 846	3 069	3 540	3 740	3 292	2 827	2 064	2 121	32 360	1 874	2 053	2 388	2 055	2 731	3 046	14 146	-4,3%
9	BARCELONA	ES	1 635	1 775	2 108	2 407	2 388	2 491	2 821	2 879	2 501	2 360	2 007	1 915	27 287	1 673	1 828	2 283	2 228	:	:	8 012	1,1%
10	PARIS/ORLY	FR	1 808	1 747	2 005	2 242	2 195	2 259	2 530	2 417	2 059	2 010	1 874	1 942	25 087	:	:	:	:	:	:	:	:
11	PALMA DE MALLORCA	ES	731	811	1 111	1 590	2 215	2 588	2 977	3 054	2 508	1 978	836	775	21 173	697	777	1 109	1 330	:	:	3 913	-7,8%
12	DUBLIN	IE	1 443	1 425	1 685	1 739	1 842	1 940	2 116	2 096	1 783	1 692	1 364	1 347	20 472	1 186	1 229	1 491	:	:	:	3 907	-14,2%
13	LONDON/STANSTED	UK	1 288	1 295	1 534	1 629	1 647	1 840	2 182	2 224	1 856	1 776	1 312	1 366	19 949	1 216	1 238	1 470	1 232	1 623	1 744	8 523	-7,7%
14	KØBENHAVN/KASTRUP	DK	1 297	1 296	1 504	1 620	1 689	1 905	1 986	1 857	1 789	1 803	1 495	1 364	19 605	:	:	:	:	:	:	:	:
15	MANCHESTER	UK	1 181	1 150	1 341	1 455	1 712	1 846	2 036	2 151	1 948	1 601	1 122	1 085	18 630	1 015	1 028	1 248	1 075	1 572	1 835	7 773	-10,5%
16	WIENSCHWEDHAT	AT	1 149	1 132	1 364	1 512	1 597	1 643	1 818	1 756	1 706	1 635	1 378	1 353	18 045	1 198	1 194	1 489	:	:	:	3 881	6,4%
17	DÜSSELDORF	DE	1 080	1 067	1 313	1 390	1 593	1 640	1 869	1 717	1 750	1 783	1 349	1 173	17 724	1 123	1 131	1 469	1 183	1 745	1 745	8 396	3,9%
18	MILANO/MALPENSA	IT	1 183	1 117	1 365	1 476	1 457	1 570	1 716	1 887	1 600	1 470	1 234	1 272	17 948	1 297	1 201	1 490	:	:	:	3 988	8,8%
19	BRUXELLES/NATIONAL	BE	996	1 011	1 244	1 504	1 526	1 547	1 804	1 725	1 607	1 480	1 223	1 119	16 785	1 016	1 063	:	:	:	:	2 079	3,6%
20	ATHENS	GR	946	865	1 048	1 368	1 371	1 577	1 837	1 906	1 637	1 368	1 086	1 130	16 138	1 046	948	1 162	:	:	:	3 156	10,4%
21	STOCKHOLM/ARLANDA	SE	1 120	1 129	1 371	1 342	1 437	1 534	1 351	1 411	1 440	1 439	1 305	1 180	16 058	1 114	1 158	1 423	1 029	1 531	1 614	7 870	-0,8%
22	BERLIN/TEGEL	DE	913	948	1 154	1 176	1 252	1 255	1 276	1 222	1 346	1 370	1 172	1 051	14 133	948	956	1 221	942	1 319	1 400	6 786	1,3%
23	LISBOA	PT	874	800	945	1 191	1 121	1 139	1 391	1 495	1 227	1 160	928	993	13 265	915	872	1 038	1 087	1 168	1 225	6 305	3,9%
24	HELSINKI/VANTAA	FI	955	949	1 088	1 064	1 029	1 145	1 126	1 130	1 099	1 138	921	960	12 602	944	950	1 160	778	1 112	1 232	6 176	-0,9%
25	HAMBURG	DE	771	798	995	1 001	1 070	1 078	1 175	1 085	1 150	1 199	964	892	12 178	799	831	1 082	836	1 196	1 157	5 900	3,3%
26	PRAHARUZYNE	CZ	641	613	801	943	986	1 128	1 308	1 338	1 181	1 008	826	829	11 602	685	662	855	785	1 004	1 109	5 101	-0,2%
27	MALAGA	ES	563	608	789	1 024	1 140	1 176	1 339	1 380	1 202	1 102	657	621	11 601	552	609	803	893	:	:	2 857	-4,3%
28	NICE/CÔTE D'AZUR	FR	541	540	685	835	970	991	1 134	1 134	945	853	595	591	9 813	:	:	:	:	:	:	:	:
29	KÖLN/BONN	DE	571	561	678	791	904	920	1 032	988	969	947	684	651	9 696	581	580	731	648	943	941	4 423	0,0%
30	LONDON/LUTON	UK	576	545	672	787	841	861	978	1 012	868	811	599	564	9 115	529	555	663	589	783	836	3 954	-7,7%

Source: Eurostat (avia.paoo)

* Top-30 airports according to the total annual passengers handled in 2009

Comments

Definition of “Passengers carried”

All passengers on a particular flight counted once only and not repeatedly on each individual stage of that flight. This excludes direct transit passengers.

Exclusion of double counting

The national transport (included in the total transport at country level) and the intra-EU transport aggregates (included in the total transport at EU level) have been calculated excluding double counting.

2010 data

Monthly data is presented on the basis of the available countries. 2009/2010 data comparisons have been made while using only the selection of countries for which 2010 data is available.

The estimate of the total transport for the first quarter of 2010 in Graph 1 covers all EU Member States.

Country Specific Notes

Iceland: The data presented refer to passengers on board (Flight Stage concept) instead of passengers carried (On Flight Origin Destination concept) due to availability issues for 2009 monthly data.

Norway: No data available for 2009 and 2010.

EU Country codes

BE Belgium – BG Bulgaria – CZ Czech Republic – DK Denmark – DE Germany – EE Estonia – IE Ireland – EL Greece – ES Spain – FR France – IT Italy – CY Cyprus – LV Latvia – LT Lithuania – LU Luxembourg – HU Hungary – MT Malta – NL Netherlands – AT Austria – PL Poland – PT Portugal – RO Romania – SI Slovenia – SK Slovakia – FI Finland – SE Sweden – UK United Kingdom

Legend

The symbol “.” stands for “data not available”.

This publication was produced with the assistance of Mathieu Erzar and Julien Tardivon.

Further information

Eurostat Website: <http://ec.europa.eu/eurostat>

Data on “Transport statistics”

<http://epp.eurostat.ec.europa.eu/portal/page/portal/transport/data/database>

Select “Air transport”

More information about “Transport statistics”

<http://epp.eurostat.ec.europa.eu/portal/page/portal/transport/introduction>

European Statistical Data Support:

Contact details for this support network can be found on our Internet site:

<http://ec.europa.eu/eurostat/>

Manuscript completed on: 30.11.2010

Data extracted on: 28.10.2010

ISSN 1977-0340

Catalogue number: KS-QA-10-048-EN-N

© European Union, 2010