

## Sewerage service in France: key data for 2008

The fourth survey on public water supply and sewerage services for 2008 confirms the continued development of collective sewerage by municipalities, covering 82% of dwellings in France.

While there has been a trend towards less municipal organisation since 1998, internal municipal management appears to be regaining

ground in comparison with 2004. A quarter of the collection network, i.e. 95,000 km, is for stormwater only.

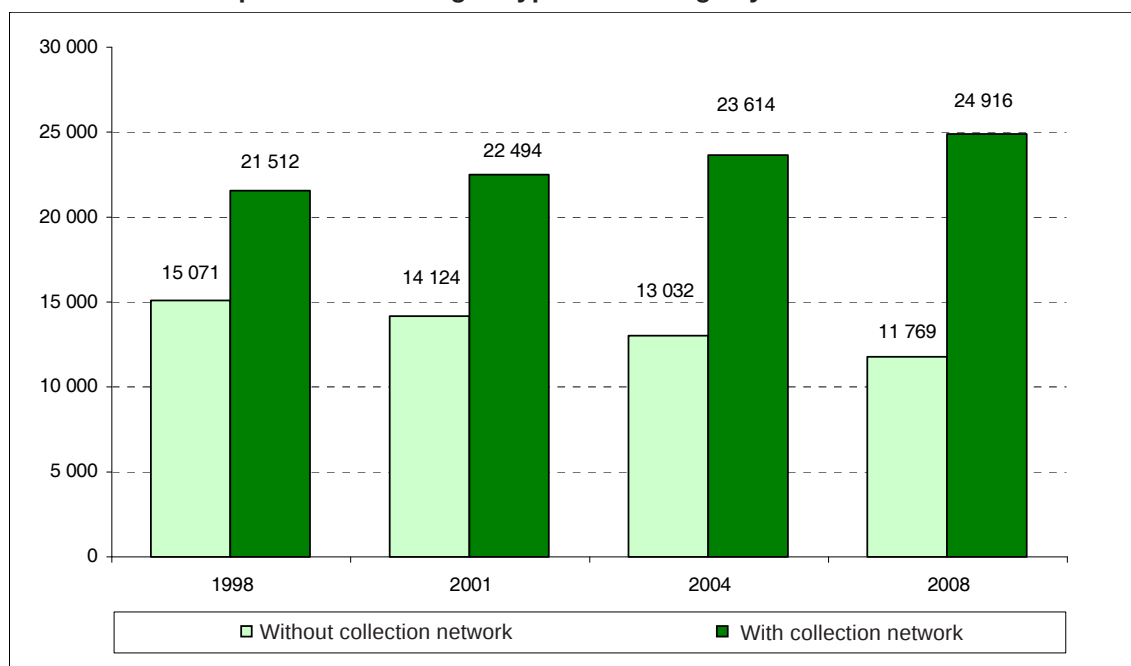
Two-thirds of connected household wastewater is subjected to tertiary treatment. Showing a sharp increase in relation to 2004, three-quarters of municipalities have introduced a public non-collective sewerage service.

### Connection to collective networks continuing

The number of municipalities that have introduced a collective sewerage service (collection and/or treatment) over at least a part of their area has been increasing for 10 years. Only 32% of municipalities, mainly small ones, did not have a collection network in 2008.

The number of dwellings equipped with an individual sewerage system remains at around 5 million, whereas the number of dwellings connected to a treatment plant is continuing to increase: 82% of France's dwellings were connected to a collective system for collection and treatment in 2008.

Number of municipalities according to type of sewerage system

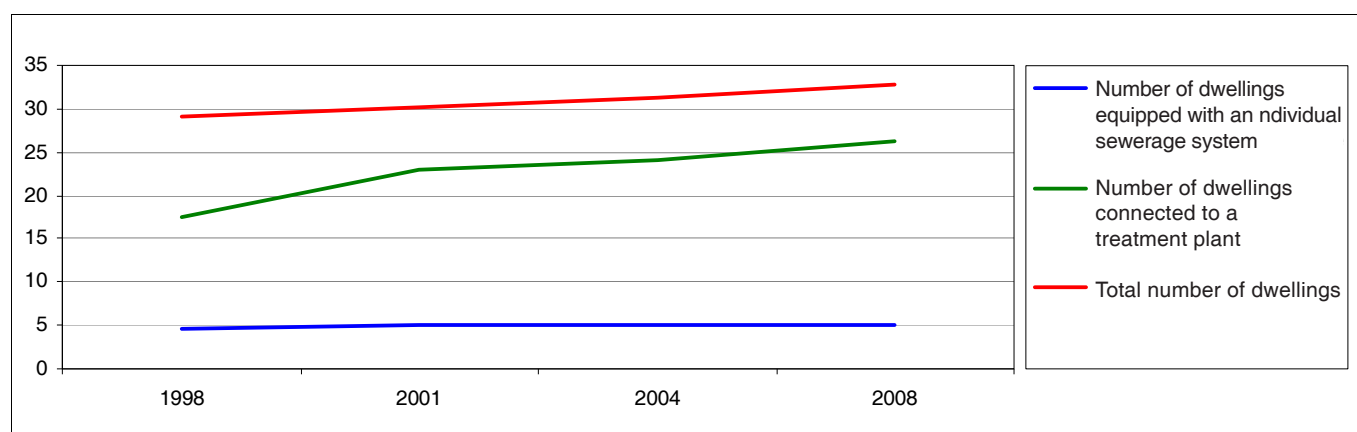


Note: a municipality may have a collection network not connected to treatment plant.

Source: SOeS/SSP, Water Survey 1998, 2001, 2004, 2008

## Development of sewerage systems for dwellings

In millions



Source: SOEs/SSP, Water Survey 1998, 2001, 2004, 2008 and *Comptes du logement*

The level of connection of dwellings to a collective network varies from region to region, depending on the degree of urbanisation: it reaches 97% in Île-de-France, against 65% in Limousin.

In parallel, the number of dwellings whose effluents are discharged into the natural environment without treatment dropped to 1.1 million in 2008, against 1.5 million in 2004.

## Number of dwellings per region according to type of sewerage system in 2008

In number of dwellings

As %

Region	Dwellings with treatment			Dwellings without treatment			Total	Proportion of dwellings connected to a treatment plant	Proportion of dwellings without connection to collection network or individual sewerage system
	Connected to a treatment plant	With individual sewerage system	Total	Connected to collection network but not to treatment plant	Without connection to collection network or individual system	Total			
Alsace	791 175	14 606	805 781	20 225	25	20 250	826 031	95.8	0.0
Aquitaine	1 231 959	343 193	1 575 152	249	113 653	113 902	1 689 054	72.9	6.7
Auvergne	564 881	152 452	717 333	18 535	45 319	63 854	781 187	72.3	5.8
Basse-Normandie	590 995	166 975	757 970	671	41 833	42 504	800 475	73.8	5.2
Bourgogne	657 940	163 837	821 777	1 495	43 743	45 237	867 014	75.9	5.0
Bretagne	1 192 384	475 392	1 667 776	1 783	17 859	19 641	1 687 417	70.7	1.1
Centre	955 577	317 260	1 272 838	2 822	4 103	6 925	1 279 763	74.7	0.3
Champagne-Ardenne	528 720	117 697	646 416	12 524	8 139	20 663	667 079	79.3	1.2
Corse	159 131	27 137	186 268	28 191	6 307	34 499	220 767	72.1	2.9
Franche-Comté	449 931	65 701	515 632	31 708	11 608	43 316	558 948	80.5	2.1
Haute-Normandie	663 976	180 251	844 227	117	692	809	845 037	78.6	0.1
Île-de-France	5 186 560	94 607	5 281 167	26 093	0	26 093	5 307 260	97.7	0.0
Languedoc-Roussillon	1 550 986	119 489	1 670 475	15 261	5 251	20 512	1 690 987	91.7	0.3
Limousin	271 720	155 674	427 394	4 017	12 366	16 383	443 777	61.2	2.8
Lorraine	875 408	87 370	962 778	128 718	14 757	143 475	1 106 253	79.1	1.3
Midi-Pyrénées	1 042 405	451 718	1 494 123	10 182	7 655	17 837	1 511 960	68.9	0.5
Nord - Pas-de-Calais	1 497 939	141 675	1 639 615	2 213	101 904	104 116	1 743 731	85.9	5.8
Pays de la Loire	1 480 439	394 513	1 874 952	295	10 743	11 038	1 885 990	78.5	0.6
Picardie	666 603	205 411	872 014	3 175	6 734	9 908	881 923	75.6	0.8
Poitou-Charentes	666 449	251 750	918 199	4 529	45 087	49 616	967 815	68.9	4.7
Provence-Alpes-Côte d'Azur	2 385 901	324 175	2 710 076	33 757	4 085	37 842	2 747 918	86.8	0.1
Rhône-Alpes	2 599 062	344 500	2 943 562	71 783	59 127	130 910	3 074 472	84.5	1.9
<b>Metropolitan France</b>	<b>26 010 140</b>	<b>4 595 387</b>	<b>30 605 527</b>	<b>418 342</b>	<b>560 987</b>	<b>979 329</b>	<b>31 584 856</b>	<b>82.4</b>	<b>1.8</b>
Guadeloupe	72 701	93 526	166 227	337	45 025	45 362	211 589	34.4	21.3
Guyane	29 392	11 018	40 410	5 122	19 479	24 601	65 011	45.2	30.0
Martinique	88 849	92 016	180 865	n. av.	n. av.	n. av.	180 865	49.1	n. av.
Mayotte	9 468	9 000	18 468	0	27 270	27 270	45 738	20.7	59.6
Réunion	130 570	166 130	296 700	9 894	4 808	14 702	311 402	41.9	1.5
<b>Whole of France</b>	<b>26 341 120</b>	<b>4 967 077</b>	<b>31 308 197</b>	<b>433 695</b>	<b>657 569</b>	<b>1 091 264</b>	<b>32 399 461</b>	<b>81.3</b>	<b>2.0</b>

n. av.: not available

Source: SOEs/SSP, Water Survey 2008

## 66% of municipalities retain sewerage management

In 2008, collection and/or collective treatment services were organised on an inter-municipal basis for 74% of dwellings. Furthermore, internal management of sewerage services is retained by municipalities for 54% of dwellings.

Although inter-municipal organisation of the service increased

continuously between 1998 and 2008, its internal management showed a significant increase after a downward trend between 1998 and 2004: 66% of municipalities having collective sewerage were managing the service in 2008, against 63.5% in 2004.

### Breakdown of dwellings in terms of organisation and management of collective sewerage in 2008

Number of dwellings

Region	Municipal organisation			Inter-municipal or mixed organisation			Together		
	Internal	Delegation or mixed	Together	Internal	Delegation or mixed	Together	Internal	Delegation or mixed	Together
Alsace	s	s	37 158	s	s	774 242	410 218	401 182	811 400
Aquitaine	139 550	234 016	373 566	222 843	635 799	858 642	362 392	869 816	1 232 208
Auvergne	186 014	35 549	221 563	235 369	126 485	361 854	421 383	162 034	583 416
Basse-Normandie	55 854	88 194	144 048	136 095	311 523	447 618	191 949	399 717	591 667
Bourgogne	153 087	108 502	261 589	63 737	334 108	397 845	216 824	442 611	659 434
Bretagne	393 200	399 864	793 064	68 467	332 636	401 103	461 667	732 500	1 194 167
Centre	160 645	210 327	370 972	343 278	244 149	587 427	503 924	454 475	958 399
Champagne-Ardenne	80 029	88 764	168 794	223 088	149 362	372 450	303 117	238 126	541 244
Corse	50 913	20 187	71 100	9 778	106 445	116 223	60 691	126 632	187 323
Franche-Comté	169 714	34 075	203 789	136 323	141 527	277 850	306 036	175 602	481 639
Haute-Normandie	27 836	60 736	88 572	173 431	402 090	575 521	201 267	462 826	664 093
Île-de-France	79 836	96 471	176 307	3 849 211	1 187 134	5 036 345	3 929 047	1 283 605	5 212 653
Languedoc-Roussillon	194 624	456 575	651 199	43 214	871 835	915 049	237 838	1 328 410	1 566 248
Limousin	81 105	46 021	127 126	100 546	48 065	148 611	181 651	94 086	275 737
Lorraine	155 554	35 043	190 597	339 683	473 846	813 529	495 237	508 889	1 004 126
Midi-Pyrénées	318 517	135 214	453 730	200 352	398 504	598 856	518 869	533 718	1 052 586
Nord - Pas-de-Calais	10 455	34 182	44 637	762 893	692 622	1 455 515	773 348	726 804	1 500 152
Pays de la Loire	218 159	334 673	552 832	341 363	586 528	927 891	559 522	921 201	1 480 723
Picardie	48 674	129 181	177 855	173 574	318 348	491 923	222 249	447 529	669 778
Poitou-Charentes	94 893	61 359	156 252	367 439	147 287	514 726	462 332	208 646	670 978
Provence-Alpes-Côte d'Azur	268 958	488 986	757 944	102 334	1 559 381	1 661 714	371 291	2 048 367	2 419 658
Rhône-Alpes	414 473	354 853	769 325	623 165	1 278 354	1 901 519	1 037 638	1 633 207	2 670 845
Guadeloupe	s	s	s	s	s	s	29 916	43 122	73 038
Guyane	1 126	15 972	17 098	0	17 416	17 416	1 126	33 388	34 514
Martinique	s	s	s	s	s	s	36 403	52 446	88 849
Mayotte	0	0	0	9 468	0	9 468	9 468	0	9 468
Réunion	23 590	42 401	65 991	0	74 473	74 473	23 590	116 874	140 464
<b>Whole of France</b>	<b>24 716</b>	<b>58 373</b>	<b>83 089</b>	<b>9 468</b>	<b>91 889</b>	<b>101 357</b>	<b>100 503</b>	<b>245 830</b>	<b>346 333</b>

Note to readers: organisation of the sewerage service is termed inter-municipal or mixed if at least one of the services (collection or treatment) is inter-municipal. Management of the sewerage service is termed delegated or mixed if at least one of the services (collection or treatment) is delegated.

<<s>> = data covered by secrecy of statistics

Source: SOEs/SSP, Water Survey 2008

## More than 70% of municipalities have delimited their sewerage zones

In 2004, 56% of municipalities had delimited their sewerage zones, four years later they were more than 70%. Amongst these, 10% had not yet obtained approval by the local council

(essentially small municipalities with populations of less than 400).

## Number of municipalities according to delimiting of sewerage zones in 2008

Number of municipalities

Delimiting of zones		Populations of municipalities							Total	
		Less than 400	From 400 to 999	From 1,000 to 1,999	From 2,000 to 3,499	From 3,500 to 9,999	From 10,000 to 19,999	From 20,000 to 49,999		More than 50,000
Undelimited zones		6 134	2 190	750	372	398	129	102	40	10 115
Delimited zones	Zoning not subject to public inquiry or not declared	1 940	1 015	421	271	232	66	39	11	3 995
	Zoning subject to public inquiry	10 007	6 102	3 181	1 404	1 339	292	178	72	22 576
<b>Total</b>		<b>18 081</b>	<b>9 307</b>	<b>4 352</b>	<b>2 047</b>	<b>1 969</b>	<b>487</b>	<b>319</b>	<b>123</b>	<b>36 686</b>

Note: the zoning project is the result of studies and must be the subject of a public inquiry. It is then submitted for approval by the municipal council to be brought to conclusion and thereby become 'enforceable with regard to third parties'.

Source: SOEs/SSP, Water Survey 2008

## One quarter of the length of collection network is for stormwater

In 2008, 20,580 municipalities had separate collection systems in a part of their municipal area. The separate system is 297,000 km long and one-third of it is reserved for collection of stormwater, the rest being for wastewater. The combined system currently has 97,000 km of pipes, i.e. 25% of the total (but from 5% to 72% depending on the metropolitan regions).

The average length of pipe for all of the networks is 14.7 metres per connected dwelling.

Peri-urban and rural municipalities have more or less the same lengths of network per consumer, regardless of region, no doubt as a result of greater use of individual sewerage systems in rural areas for the most isolated consumers.

There are strong regional differences amongst municipalities with the same urban, peri-urban or rural characteristics: 4.4 m on average for an urban dweller in Ile de France against 16.0 m on average for someone living in Brittany.

## Length of sewerage network according to type of wastewater collection management in 2008

In km

Region	Internal				Delegated management				Total			
	Combined system	Separate wastewater system	Separate stormwater system	Proportion of combined system in overall length (as %)	Combined system	Separate wastewater system	Separate stormwater system	Proportion of combined system in overall length (as %)	Combined system	Separate wastewater system	Separate stormwater system	Proportion of combined system in overall length (as %)
Alsace	6 467	4 123	3 174	46.99	2 242	7 408	5 081	15.22	8 709	11 531	8 255	30.56
Aquitaine	2 238	2 330	1 389	37.57	771	2 112	1 473	17.70	3 009	4 442	2 862	29.18
Auvergne	666	2 770	1 152	14.52	1 101	4 228	1 525	16.06	1 767	6 998	2 676	15.44
Basse-Normandie	516	1 398	602	20.51	1 477	4 460	656	22.41	1 994	5 859	1 258	21.88
Bourgogne	1 392	5 428	2 327	15.22	1 157	5 652	2 867	11.96	2 549	11 080	5 194	13.54
Bretagne	340	2 337	908	9.48	536	4 483	1 235	8.57	875	6 820	2 143	8.90
Centre	2 318	3 134	1 696	32.43	1 655	4 180	2 014	21.09	3 973	7 313	3 710	26.49
Champagne-Ardenne	6 398	2 610	2 602	55.11	4 894	3 678	2 295	45.04	11 292	6 288	4 897	50.24
Corse	5 974	2 458	2 153	56.44	4 301	1 979	1 911	52.51	10 274	4 437	4 064	54.72
Franche-Comté	5 269	1 174	1 044	70.38	3 168	485	636	73.85	8 437	1 659	1 680	71.64
Haute-Normandie	3 501	2 677	1 904	43.31	1 100	1 613	1 238	27.83	4 600	4 291	3 142	38.23
Île-de-France	1 255	5 692	2 695	13.02	922	11 066	4 772	5.50	2 177	16 758	7 467	8.25
Languedoc-Roussillon	407	5 848	3 350	4.24	971	11 221	5 328	5.54	1 379	17 069	8 677	5.08
Limousin	1 170	7 466	2 288	10.71	125	3 175	303	3.47	1 295	10 641	2 591	8.92
Lorraine	1 553	4 077	1 507	21.76	1 955	8 667	2 782	14.59	3 508	12 744	4 289	17.08
Midi-Pyrénées	2 666	7 404	3 395	19.80	706	4 632	2 297	9.25	3 372	12 036	5 692	15.98
Nord - Pas-de-Calais	1 314	2 332	1 593	25.08	639	973	719	27.42	1 953	3 305	2 312	25.80
Pays de la Loire	6 359	10 610	5 695	28.06	7 294	9 410	4 733	34.02	13 653	20 020	10 428	30.96
Picardie	3 426	3 860	2 878	33.70	1 189	1 318	1 142	32.59	4 615	5 178	4 020	33.41
Poitou-Charentes	1 201	3 585	1 076	20.48	1 939	9 821	2 039	14.05	3 140	13 406	3 115	15.97
Provence-Alpes-Côte d'Azur	1 478	3 478	1 434	23.13	1 900	12 771	4 595	9.86	3 378	16 249	6 029	13.17
Rhône-Alpes	1 172	188	91	80.78	243	929	108	19.00	1 415	1 117	199	51.82
<b>Metropolitan France</b>	<b>57 080</b>	<b>84 980</b>	<b>44 951</b>	<b>30.52</b>	<b>40 285</b>	<b>114 261</b>	<b>49 749</b>	<b>19.72</b>	<b>97 365</b>	<b>199 241</b>	<b>94 699</b>	<b>24.88</b>
Guadeloupe	0	206	0	0.00	0	282	0	0.00	0	488	0	0.00
Guyane	0	12	0	0.00	0	343	60	0.00	0	355	60	0.00
Martinique	0	338	0	0.00	0	205	278	0.00	0	543	278	0.00
Mayotte	0	82	0	0.00	0	0	0	0.00	0	82	0	0.00
Réunion	0	307	56	0.00	0	962	132	0.00	0	1 269	188	0.00
<b>Whole of France</b>	<b>57 080</b>	<b>85 925</b>	<b>45 007</b>	<b>30.36</b>	<b>40 286</b>	<b>116 053</b>	<b>50 219</b>	<b>19.50</b>	<b>97 366</b>	<b>201 978</b>	<b>95 225</b>	<b>24.68</b>

Source: SOEs/SSP, Water Survey 2008

## Average length of network per dwelling connected in 2008

Metres/connected dwelling

Region	Type of municipality			
	Urban	Peri-urban	Rural	Total
Alsace	8.8	21.9	23.5	14.5
Aquitaine	13.7	23.9	22.2	16.7
Auvergne	14.2	28.8	34.7	23.7
Basse-Normandie	13.3	17.7	21.6	16.6
Bourgogne	13.0	35.3	30.4	22.7
Bretagne	16.0	28.6	33.5	22.7
Centre	14.3	24.5	27.7	19.6
Champagne-Ardenne	11.3	27.5	30.7	19.1
Corse	8.6	21.5	16.9	14.6
Franche-Comté	15.6	36.5	32.0	25.0
Haute-Normandie	10.1	20.8	22.2	13.7
Île-de-France	4.4	16.4	0.0	5.5
Languedoc-Roussillon	8.6	16.0	14.8	12.6
Limousin	16.6	48.4	37.5	27.5
Lorraine	14.5	24.4	26.5	18.7
Midi-Pyrénées	13.8	31.1	29.0	20.0
Nord - Pas-de-Calais	13.3	22.5	25.1	15.0
Pays de la Loire	13.0	25.2	22.1	17.8
Picardie	13.1	19.2	21.4	17.1
Poitou-Charentes	16.7	32.9	23.5	21.7
Provence-Alpes-Côte d'Azur	8.5	16.5	19.5	10.6
Rhône-Alpes	11.4	29.4	24.2	16.5
Overseas departments	n. av.	n. av.	n. av.	9.4
<b>Total for France</b>	<b>10.1</b>	<b>24.1</b>	<b>24.1</b>	<b>14.7</b>

n. av.: not available

Source: SOeS/SSP, Water Survey 2008

## 5.8 billion m<sup>3</sup> of water sent to treatment plants

The water collected (wastewater and stormwater) is sent to France's 18,800 treatment plants. The 5.8 billion m<sup>3</sup> of effluent transported in 2008 represent an average of 220 m<sup>3</sup> of wastewater treated per dwelling.

In 60% of treatment plants, treatment results in the production of sludge: in 2008, the wastewater from a dwelling generated 44 kg of dry solids on average.

## Volumes of effluent entering treatment plants and sludge produced in 2008

Region	Number of dwellings connected to a WTP	Volume entering treatment plant (millions of m <sup>3</sup> )	Volume entering per connected dwelling (m <sup>3</sup> )	Sludge produced per connected dwelling (kg of DS)	Kg of sludge dry solids produced per m <sup>3</sup> of drinking water taken
Alsace	791 175	267	337	52	0.28
Aquitaine	1 231 959	316	257	30	0.14
Auvergne	564 881	140	249	35	0.18
Basse-Normandie	590 995	92	156	37	0.26
Bourgogne	657 940	110	168	33	0.17
Bretagne	1 192 384	197	165	42	0.29
Centre	955 577	159	167	42	0.22
Champagne-Ardenne	528 720	89	169	45	0.25
Corse	159 131	44	279	43	0.18
Franche-Comté	449 931	96	214	37	0.19
Haute-Normandie	663 976	109	165	42	0.19
Île-de-France	5 186 560	1 015	196	35	0.25
Languedoc-Roussillon	1 550 986	250	161	31	0.19
Limousin	271 720	69	253	37	0.17
Lorraine	875 408	209	238	47	0.22
Midi-Pyrénées	1 042 405	202	194	42	0.19
Nord - Pas-de-Calais	1 497 939	304	203	56	0.32
Pays de la Loire	1 480 439	262	177	43	0.36
Picardie	666 603	91	137	47	0.23
Poitou-Charentes	666 449	108	162	68	0.42
Provence-Alpes-Côte d'Azur	2 385 901	429	180	46	0.17
Rhône-Alpes	2 599 062	682	262	67	0.33
<b>Metropolitan France</b>	<b>26 010 140</b>	<b>5 754</b>	<b>221</b>	<b>44</b>	<b>0.24</b>
Guadeloupe	72 701	13	185	15	0.02
Guyane	29 392	n. av.	n. av.	n. av.	n. av.
Martinique	88 849	10	112	36	0.09
Réunion	130 570	19	146	19	0.02
<b>Whole of France</b>	<b>26 331 652</b>	<b>5 796</b>	<b>220</b>	<b>44</b>	<b>0.23</b>

Note DS = Dry Solids

n. av. = not available

Source: SOeS/SSP, Water Survey 2008 and DEB-Onema, BDERU 2008

## Wastewater from 69% of connected dwellings undergoes tertiary treatment

Cross referencing of the results of the 2008 survey with data from the BDERU (urban wastewater database) for their common variable, the municipality, allows estimation of level of treatment by number of dwellings connected according to type of management.

The wastewater collected from 93% of connected dwellings undergoes at least secondary treatment, representing three-

quarters of the effluent treated. Wastewater from 69% of connected dwellings requires tertiary treatment. At national level, these dwellings are fairly evenly distributed between internal municipal management and delegated management. In the overseas departments, 6% of dwellings are connected to plants providing either no water treatment or merely preliminary treatment.

**The European Directive of 21 May 1991, known as the UWWT Directive**, requires member states to ensure that urban 'agglomerations' are equipped with systems to collect urban wastewater and that the wastewater should receive appropriate treatment in accordance with the scale and location of the discharges from each agglomeration.

The directive requires a minimum of obligatory secondary treatment for all plants with a capacity equal to or greater than 2,000 population equivalent (p.e.) by 31 December 2005.

For WTP with capacities above 10,000 p.e. discharging into sensitive areas, tertiary treatment is required to ensure effective removal of phosphorous and/or nitrogen.

In 2008, 98% of WTPs of more than 2,000 p.e. were providing at least secondary treatment and 83% of plants of over 10,000 p.e. were providing tertiary treatment, even though only 65% were discharging into a sensitive area (source BDERU).

## Level of treatment according to type of management of collective sewerage service in 2008

In thousands of households connected to WTP

Region	Régie					Delegation				
	No treatment	Pre-treatment	Primary treatment	Secondary treatment	Tertiary treatment	No treatment	Pre-treatment	Primary treatment	Secondary treatment	Tertiary treatment
Alsace	-	-	-	19.5	348.4	-	-	-	7.8	384.7
Aquitaine	-	1.6	17.0	56.1	278.2	-	-	2.3	327.9	495.9
Auvergne	-	-	25.9	76.6	289.9	-	-	6.5	14.1	88.0
Basse-Normandie	-	-	1.6	86.9	103.5	-	-	-	72.8	313.9
Bourgogne	-	-	2.0	68.9	82.9	-	-	2.9	135.8	264.5
Bretagne	-	0.7	-	88.6	374.4	-	-	2.1	90.2	614.8
Centre	-	-	27.1	69.1	427.0	-	-	17.5	22.0	384.4
Champagne-Ardenne	2.5	-	-	24.1	259.1	-	-	-	9.2	226.5
Corse	0.6	-	21.4	24.9	-	-	-	30.9	41.8	32.6
Franche-Comté	-	-	13.9	27.2	198.9	-	-	3.5	6.1	154.6
Haute-Normandie	-	-	0.5	112.1	95.8	-	-	2.2	54.7	383.0
Île-de-France	-	-	5.8	30.9	4 427.2	-	-	-	160.5	483.0
Languedoc-Roussillon	3.7	-	17.8	120.7	66.3	-	-	16.0	541.0	748.0
Limousin	1.6	1.3	15.6	51.5	105.8	-	-	2.5	21.5	68.3
Lorraine	2.8	-	-	24.1	332.4	0.5	-	3.0	4.1	459.1
Midi-Pyrénées	3.5	-	5.2	99.9	289.9	-	-	3.7	40.9	434.9
Nord - Pas-de-Calais	-	-	-	301.9	451.4	-	-	4.6	44.2	671.4
Pays de la Loire	-	-	25.3	213.6	306.4	-	-	16.7	143.2	750.7
Picardie	-	-	15.7	16.4	186.5	-	-	5.2	73.3	366.9
Poitou-Charentes	-	-	34.0	97.1	313.3	-	-	-	35.7	128.0
Provence-Alpes-Côte d'Azur	10.9	-	18.0	168.8	140.2	2.8	-	332.4	1 327.7	320.0
Rhône-Alpes	14.4	2.2	2.4	401.6	607.6	0.4	-	25.1	787.5	651.3
Overseas departments	0.7	-	-	48.8	30.9	4.1	13.7	48.4	126.0	36.8
<b>Total</b>	<b>40.9</b>	<b>5.8</b>	<b>249.1</b>	<b>2 229.2</b>	<b>9 716.1</b>	<b>7.8</b>	<b>13.7</b>	<b>525.7</b>	<b>4 088.0</b>	<b>8 462.2</b>

Note: 622,879 dwellings with internal municipal management and 379,595 under delegation do not have known level of treatment.  
Source: SOEs/SSP, Water Survey 2008 and DEB-Onema, BDERU 2008.

## Introduction of public non-collective sewerage services is increasing

In 2008, it was estimated that three-quarters of France's municipalities had introduced a public non-collective sewerage service (French acronym SPANC), covering 85% of unconnected dwellings, representing an increase of 46 points since 2004. 87% of municipalities had chosen to group together

to introduce their services.

Inspection of new systems is ensured by 90% of them, with 76% inspecting existing systems and 38% providing regular inspections.

## Non-collective public sewerage services in 2008

Region	Number of municipalities with public non-collective service	proportion providing			Number of dwellings in non-collective sewerage zones	Proportion of dwellings inspected amongst dwellings in non-collective sewerage zones
		Checking of design and construction (%)	Operation/maintenance diagnosis (%)	Regular inspection (%)		
Alsace	498	71	65	31	6 634	13.92
Aquitaine	1 827	98	90	56	272 346	41.85
Auvergne	958	78	51	39	112 212	18.00
Basse-Normandie	1 490	89	78	30	152 486	30.15
Bourgogne	1 243	86	70	34	152 021	21.30
Bretagne	1 225	96	82	46	465 441	56.35
Centre	1 437	83	72	18	224 420	17.38
Champagne-Ardenne	939	77	41	26	71 384	3.72
Corse	23	43	0	43	3 803	0.00
Franche-Comté	543	79	82	44	28 911	20.04
Haute-Normandie	1 357	91	87	57	163 381	63.14
Île-de-France	711	82	78	57	52 992	28.64
Languedoc-Roussillon	757	76	71	28	75 383	17.80
Limousin	587	100	84	14	140 267	24.85
Lorraine	1 513	95	77	31	50 729	16.71
Midi-Pyrénées	2 551	93	77	57	302 677	29.71
Nord - Pas-de-Calais	643	92	62	57	106 464	21.52
Pays de la Loire	1 410	98	76	19	322 320	41.80
Picardie	1 562	90	78	49	113 123	18.40
Poitou-Charentes	1 351	99	93	27	209 330	31.34
Provence-Alpes-Côte d'Azur	701	81	68	19	231 936	22.03
Rhône-Alpes	1 955	91	85	46	247 247	28.17
Overseas departments	64	70	17	2	86 704	0.04
<b>Whole of France</b>	<b>25 344</b>	<b>90</b>	<b>76</b>	<b>38</b>	<b>3 592 211</b>	<b>32.00</b>

Source: SOEs/SSP, Water Survey 2008

As the initial deadline - set at 30 December 2005 by the 1992 Water Act and requiring creation of public non-collective services and inspection of systems - could not be met, an extension applying only to inspection of sewerage systems was

granted. Municipalities are required to have carried out at least an initial inspection of all individual sewerage systems before 31 December 2012 (2020 for Mayotte).

## Méthodologie

The 2008 survey of municipalities concerning water and sewerage services was carried out under the auspices of the water supply and sewerage observatory, by the statistics and planning office (SSP) of the Ministry of Agriculture, Foods, Fishing, Countryside and Spatial Planning (MAAPRAT) and by the statistics and observation office (SOeS) of the Ministry for Ecology, Sustainable Development, Transport and Housing (MEDDTL) ; the survey was partially financed by the national office for water and aquatic environments (Onema). It follows on from the 1998, 2001 and 2004 surveys, examining public water supply and sewerage services from several points of view: prices, existence of services, their organisation and management, plant and volumes handled.

The survey was carried out by canvassers from the regional departments for statistical and economic data of the regional authorities for food, agriculture and forests, addressing a sample of 5,215 municipalities (metropolitan France and overseas departments, including Mayotte for the first time in 2008). The sample was stratified by department and size of municipality. The sampling level went from exhaustive for municipalities with populations of more than 10,000 to 1/20 for those with less than 400. It ensures a high level of representativeness for regional results and for almost all departmental results. The published data are, in all cases, extrapolated to apply to the 36,686 municipalities of France and its overseas departments.

The survey includes data from the 'public services management' database of the departmental offices of MAAPRAT and data on treatment plants with capacities of less than 200 population equivalent collected from the plants by the appropriate technical assistance office. It is cross-referenced with the BDERU, managed by the Water and Biodiversity Directory of MEDDTL and Onema.

Ressources, territoires, habitats et logement  
Energies et climat  
Prévention des risques  
Développement durable  
Infrastructures, transports et mer

Présent  
pour  
l'avenir

## Chiffres & statistiques

Commissariat général  
au développement  
durable

Service  
de l'observation  
et des statistiques

Tour Voltaire  
92055 La Défense cedex  
Mel :  
diffusion.soes.cgdd@  
developpement-  
durable.gouv.fr  
Télécopie :  
(33/0) 1 40 81 13 30

Directeur  
de la publication  
Bruno TRÉGOUËT  
ISSN : 2102-6378

© SOeS 2011

For more information, contact:

Raphaël Chaussénéry

Patrice Grégoire

patrice.gregoire@developpement-durable.gouv.fr